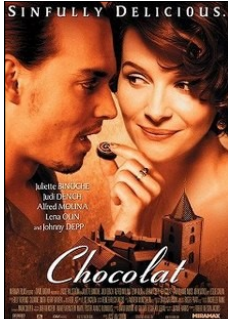


## Washington Baltimore Center for Psychoanalysis

# 2017-2018 WBCP Psychoanalytic Takes on the Cinema

WILL OPEN YOUR EYES ..... ACTIVATE YOUR EARS .... EXCITE YOUR BRAIN



November 17, 2017: **"Chocolat"** (2000) 121 min.

A woman and her daughter open a chocolate shop in a small French village that shakes up the rigid morality of the community.

**Director:** Lasse Hallström **Writers:** Joanne Harris (novel), Robert Nelson Jacobs (screenplay)

**Stars:** Juliette Binoche, Judi Dench, Alfred Molina

**Discussant:** Aurelio Zerla, MD

**Learning Objectives:** The participant will be able to:

1. Describe how loss is present in our lives in many, often subtle, easily denied forms.
2. Express an understanding of the need to mourn the mourning process itself by letting go of anachronistic attachments.
3. Identify the crucial role of transformation in the developing human's ability to grow as a result of loss.



December 8, 2017: **"Mystic River"** (2003) 138 min.

With a childhood tragedy that overshadowed their lives, three men are reunited by circumstance when one has a family tragedy.

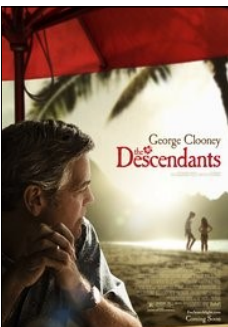
**Director:** Clint Eastwood **Writers:** Brian Helgeland (screenplay), Dennis Lehane (novel)

**Stars:** Sean Penn, Tim Robbins, Kevin Bacon

**Discussant:** Robert Winer, MD

**Learning Objectives:** The participant will be able to:

1. Specify the ways forces in tight-knit social groups affect an individual's cognition and behavior.
2. Identify the impact of guilt related to early trauma on subsequent emotional functioning.
3. Formulate the relationship between child loss and the motive of revenge.



~~January 5, 2018~~ Rescheduled to May 11, 2018: **"The Descendants"** (2011) 115 min.

A land baron tries to reconnect with his two daughters after his wife is seriously injured in a boat-  
ing accident.

**Director:** Alexander Payne **Writers:** Alexander Payne (screenplay), Nat Faxon (screenplay)

**Stars:** George Clooney, Shailene Woodley, Amara Miller

**Discussant:** Joan Turkus, MD

**Learning Objectives:** The participant will be able to:

1. Describe how the intrapsychic process of mourning is complicated by betrayal trauma.
2. Explain the ways in which prolonged life support affects the process of grieving, both positively and negatively, for families including children.
3. Explore how the loss of cultural traditions affects the grief process for both families and the community.



February 16, 2018: **"Manchester by the Sea"** (2016) 137 min.

A depressed uncle is asked to take care of his teenage nephew after the boy's father dies.

**Director:** Kenneth Lonergan **Writer:** Kenneth Lonergan

**Stars:** Casey Affleck, Michelle Williams, Kyle Chandler

**Discussant:** Bonnie L. Gallagher, LICSW

**Learning Objectives:** The participant will be able to:

1. Identify masochism, self-destructive behavior, trauma, grief, and incomplete mourning to facilitate work with patients living with these feelings.
2. Describe the tragedy that results from characters' difficulties in self-observation and regulation of affects, and explore how these difficulties impede grieving and mourning.
3. Discuss the devastation of tragic loss and explore ways to express and work through such loss and resulting trauma.



~~March 2, 2018~~ Rescheduled to April 27, 2018: **"American Sniper"** (2014) 132 min.

Navy S.E.A.L. sniper Chris Kyle's pinpoint accuracy saves countless lives on the battlefield and turns him into a legend. Back home to his wife and kids after four tours of duty, however, Chris finds that it is the war he can't leave behind.

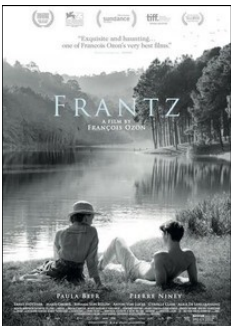
**Director:** : Clint Eastwood **Writers:** Jason Hall, Chris Kyle (book)

**Stars:** Bradley Cooper, Sienna Miller, Kyle Gallner

**Discussant:** Lauri Joseph, LCSW-C, ATR-BC

**Learning Objectives** The participant will be able to:

1. Discuss the psychic conflict between public image and private identity that patients experience.
2. Identify the signs of detachment, alienation and complicated anxiety that affect trauma survivors.
3. Describe how the after-effects of trauma interfere with re-establishing emotional closeness, intimacy, trust, and communication.



April 6, 2018: **"Frantz"** (2016) 113 min.

In the aftermath of WWI, a young German who grieves the death of her fiancé in France meets a mysterious Frenchman who visits the fiancé's grave to lay flowers.

**Director:** François Ozon

**Stars:** Paula Beer and Pierre Niney

**Discussant:** Julio Szmulowicz, MD, FRCPC, DABPN

**Learning Objectives** The participant will be able to:

1. Discern the need for and the role of mourning after a loss.
2. Understand that there is tremendous resistance to accepting the consequences of a loss and thus imagining a life AFTER it.
3. Recognize the function of lying in loss and the connection between untruths, resistance and the stages of mourning

## ***2017-18 Psychoanalytic Takes on the Cinema Registration & Fees***

Per film with 3 continuing education credits per meeting: \$30

Per film/no continuing education credits: \$15

6 Films with 3 continuing education credits per meeting: \$160

6 Films/no continuing education credits: \$75

**All meetings begin at 7:30 PM and are held at 6912 Ayr Lane, Bethesda, MD**

Pre-registration is required via the BWCPP website via the following link:

<https://bwanalysis.org/cgi/page.cgi/evtcal.html?evt=253>. If you do not have an account on the BWCPP website, you will need to create a "guest account" to register and view/print your CME/CE credit certificate after the seminar. For registration assistance, contact the WBCP at 301-470-3635/ 410-792-8060 / 202-237-1854 or [admin@bwanalysis.org](mailto:admin@bwanalysis.org).

**ALL FEES ARE NON-REFUNDABLE**

**CME/CE Information:** Continuing Medical Education – This activity has been planned and implemented in accordance with the accreditation requirements and policies of the Accreditation Council for Continuing Medical Education (ACCME) through the joint providership of the American Psychoanalytic Association and The Washington Baltimore Center for Psychoanalysis, Inc. The American Psychoanalytic Association is accredited by the ACCME to provide continuing medical education for physicians. The American Psychoanalytic Association designates this Live Activity for a maximum of 18 AMA PRA Category 1 Credit(s)™. Physicians should claim only the credit commensurate with the extent of their participation in the activity. **IMPORTANT DISCLOSURE INFORMATION FOR ALL LEARNERS:** None of the planners and presenters of this CME program have any relevant financial relationships to disclose. Continuing Education – Social Workers – The programs of The Washington Baltimore Center for Psychoanalysis, Inc. meet the criteria for continuing education as defined by the District of Columbia and Virginia Boards of Social Work, and the American Board of Examiners in Clinical Social Work. The Washington Baltimore Center for Psychoanalysis, Inc. designates this program as a continuing education activity for social work for 1 credit hour per hour for this activity. The Washington Baltimore Center for Psychoanalysis, Inc. is authorized by the Board of Social Work Examiners in Maryland to sponsor social work continuing education programs and maintains full responsibility for this program. This training qualifies for Category 2 continuing education units. Continuing Education – Psychologists – The Washington Baltimore Center for Psychoanalysis, Inc. is approved by the American Psychological Association to sponsor continuing education for psychologists. The Washington Baltimore Center for Psychoanalysis, Inc. maintains responsibility for this program and its content. Licensed Professional Counselors – The Washington Baltimore Center for Psychoanalysis, Inc. continuing education credits meet the criteria and may be submitted for re-licensure of LPCs in Maryland, DC, and Virginia.